

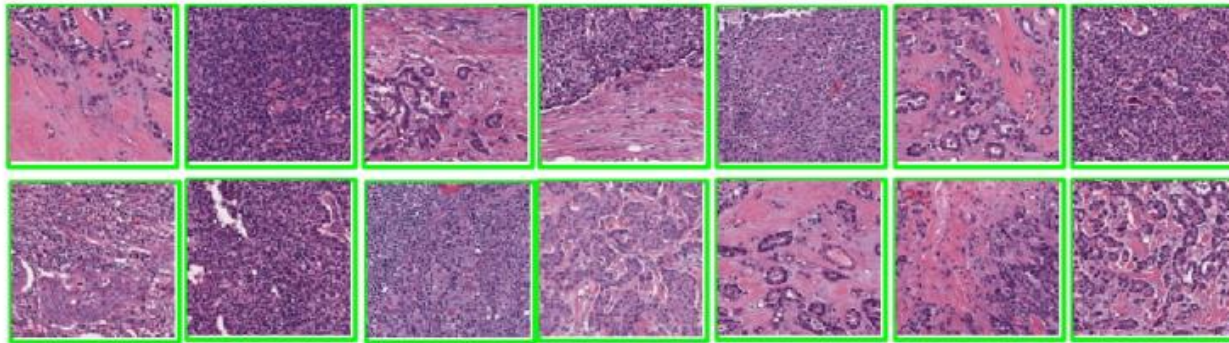
Computer Aided Cancer Grading

John (Zhaoyang) Xu

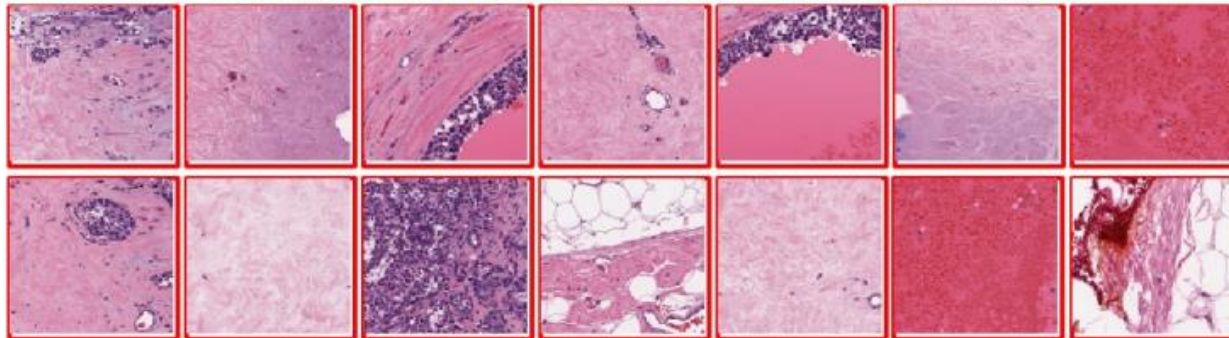
- Cancerous area segmentation and classification
- Intrusive front detection with deep network



Positive examples (IDC tissues)



Negative examples (healthy or not invasive tumor tissues)



Cruz-Roa, Angel, et al. "Automatic detection of invasive ductal carcinoma in whole slide images with convolutional neural networks." *SPIE Medical Imaging*. International Society for Optics and Photonics, 2014.