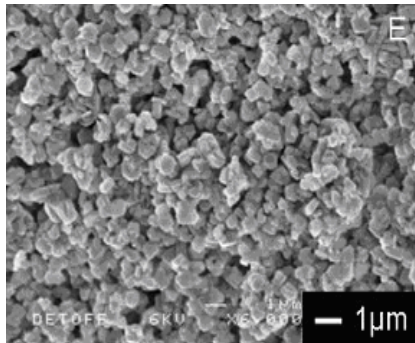


Sensing materials

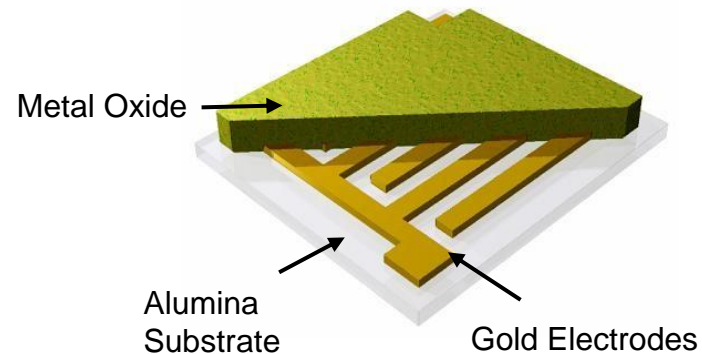


Russell Binions

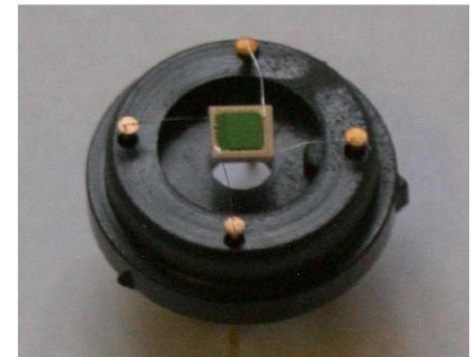
- Metal Oxide semiconductor sensors
- Nanostructured sensors
- Zeolite modification
- Composite and new sensor materials
- Environmental monitoring
- Breath analysis for medical diagnosis



Porous semiconducting oxide



Deposited on alumina substrate
with gold electrodes



Sensor and Housing